

Circulation: Cardiovascular Imaging

EDITOR'S NOTE

The Future of *Circulation: Cardiovascular Imaging*:
Expanding Our Reach and Enhancing Our Value

ORIGINAL ARTICLES

Cardiomyopathies

Early Cardiac Involvement Affects Left Ventricular
Longitudinal Function in Females Carrying
 α -Galactosidase A Mutation: Role of Hybrid Positron
Emission Tomography and Magnetic Resonance Imaging
and Speckle-Tracking Echocardiography

Microvascular Disease

Impairments in Adipose Tissue Microcirculation in Type
2 Diabetes Mellitus Assessed by Real-Time Contrast-
Enhanced Ultrasound

Editorial

Cause or Effect?: Microvascular Dysfunction in Insulin-
Resistant States

Valvular Heart Disease

Acute Versus Chronic Ischemic Mitral Regurgitation:
An Echocardiographic Study of Anatomy and
Physiology

Editorial

Mitral Valve Adaptation: Can We Win the Race?

Ventricular Structure and Function

Machine Learning Analysis of Left Ventricular Function
to Characterize Heart Failure With Preserved Ejection
Fraction

Editorial

Imaging Heart Failure With Artificial Intelligence:
Improving the Realism of Synthetic Wisdom

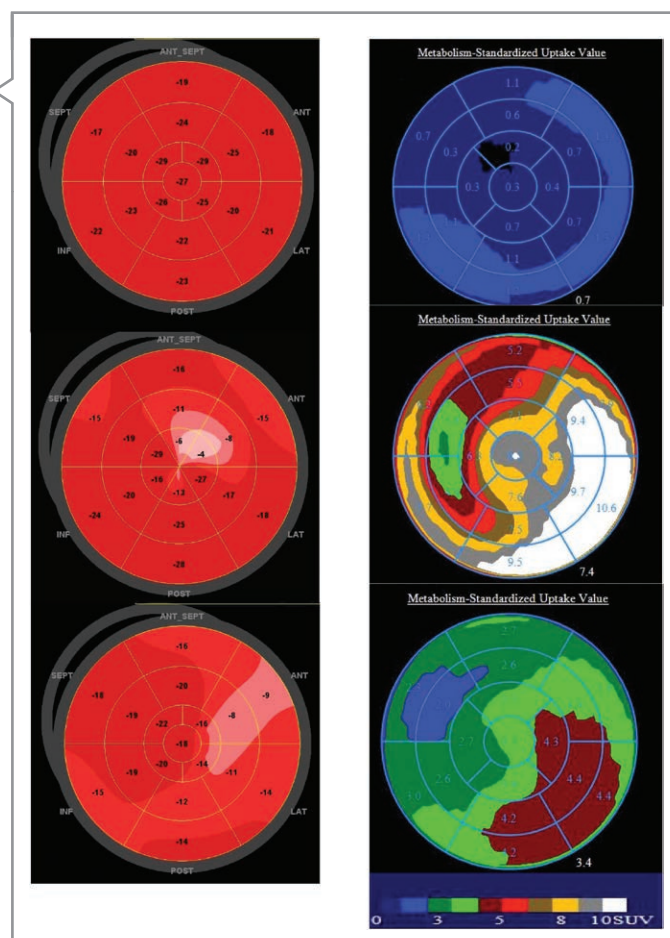
Cardiac Rotational Mechanics As a Predictor of
Myocardial Recovery in Heart Failure Patients Undergoing
Chronic Mechanical Circulatory Support: A Pilot Study

ADVANCES IN CARDIOVASCULAR IMAGING

Imaging Insights on the Aorta in Aging

CARDIOVASCULAR IMAGES

Three-Dimensional Transesophageal Echocardiography
Reconstruction in Removal of a 7-cm Left Atrial
Thrombus Attached to a Displaced Amplatzer Device



11 (4)

Circ Cardiovasc Imaging. 2018;11:

Circulation: Cardiovascular Imaging is published by the American Heart Association, 7272 Greenville Avenue, Dallas, TX 75231

Copyright © 2018 American Heart Association, Inc. All rights reserved.

Print ISSN: 1941-9651. Online ISSN: 1942-0080

The online version of this article, along with updated information and services, is located on the World Wide Web at:

<http://circimaging.ahajournals.org/content/11/4>

Permissions: Requests for permissions to reproduce figures, tables, or portions of articles originally published in *Circulation: Cardiovascular Imaging* can be obtained via RightsLink, a service of the Copyright Clearance Center, not the Editorial Office. Once the online version of the published article for which permission is being requested is located, click Request Permissions in the middle column of the Web page under Services. Further information about this process is available in the [Permissions and Rights Question and Answer](#) document.

Reprints: Information about reprints can be found online at:
<http://www.lww.com/reprints>

Subscriptions: Information about subscribing to *Circulation: Cardiovascular Imaging* is online at:
<http://circimaging.ahajournals.org/subscriptions/>